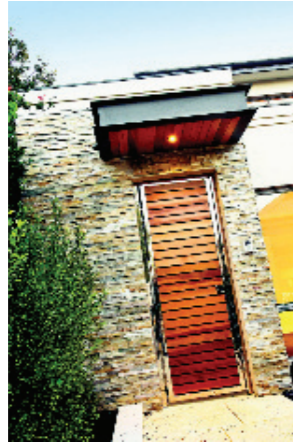


Designers were clearly up to the challenge of creating a home for a tricky Claremont block. **Laura Phillips** reports.



Slope illusion

Working with a block which sloped down from front to back posed a challenge when Exclusive Residence was designing this understated yet elegant Claremont home.

But rather than allowing it to become a hindrance, the company's designers seized the opportunity to capitalise on the tricky block and created the clever illusion of a home which gradually gets bigger as it reaches the back of the lot.

By keep the ceiling heights throughout the lower level of the home at a continuous height from the standard level of the front room, the open-plan living area at the back has a soaring ceiling which gives a grand sense of space.

Externally, the entry is screened by a double carport with timber-lined ceiling and single garage for privacy.

Limestone paths and stepping stones wind past landscaped low-maintenance garden beds and an L-shaped pond to the two entry points.

Designed with baby boomers and young executives in mind, the study has been made the front room so — with its own modern timber-lined portico and double door entrance — it can be accessed by visitors of those who may work from home.

A smaller, matching portico appears to hover over the family's secure

entrance, which is via a single timber door set in a stacked stone feature wall.

A sheltered path then leads to timber double doors at the side of the home, which open into a Travertine marble-tiled hallway bathed in natural light from a series of big, vertical windows.

Two steps lead up to the study, while nearer the entrance is the home theatre. This room has a recessed ceiling with decorative cornices.

Also in the hallway are picture recesses and a bathroom which could either function as a powder room for those using the theatre or as a bathroom if either of the front rooms was used as a bedroom.

It has a big corner shower with semi-frameless glass screens and an oversized showerhead, a toilet hidden behind the door and a long, stylish vanity with CaesarStone benchtop and integrated single basin.

Beyond the main staircase, three steps farther down lead through double timber and glass doors to the bright, airy living zone, which has blackbutt timber flooring and an abundance of windows to let in the natural light.

Full height bi-fold doors connect the living area to a paved alfresco area with a recessed timber-lined ceiling and almost full-height windows to the dining area overlook the landscaped

an innovative advantage

gardens and small portion of lawn at the back.

A dropped bulkhead over the main CaesarStone-topped bench defines the galley-style kitchen in the corner, which leads through to the laundry and a drying courtyard.

Ample storage space is provided, with overhead and underbench cupboards and drawers, as well as an appliance hatch and double fridge-freezer recess.

There is an integrated dishwasher and double sink in the main bench, while a glass splashback, gas cooktop, underbench oven and integrated range hood are against the adjacent wall.

A cavity-sliding door at the end of the kitchen separates the laundry, which has plenty of bench space and a big walk-in linen and storage cupboard.

The main staircase is carpeted, except for the first two steps which are Travertine-tiled, and has stainless-steel and frameless glass balustrades.

An open landing-style area at the top of the stairs — under a decorative coffered ceiling — could be used as a sitting room or study area, and incorporates a row of built-in, hip-height cupboards with a desktop.

At the rear of the second floor are three minor bedrooms, two with double built-in robes and one with a triple robe. These rooms are serviced by a bathroom which is divided into three areas — an oversized bath and shower behind

one door, a separate toilet and an open powder room area with a single vanity and mirror.

At the front of this level, on the other side of the staircase and a good distance from the children's or guests' bedrooms, is the opulent main suite.

Solid double doors open to the sleeping area, which has a row of three vertical frosted windows along one wall and a big horizontal window on the other to flood the room with as much natural light as possible.

A sunken spa bath in the corner of the ensuite is visible from the sleeping area through a big window, creating a luxurious hotel-like feel.

There is an open entry to the ensuite off the bedroom, as there is to the long, dressing room-style walk-through robe which runs the length of the room.

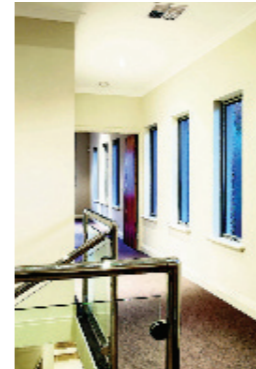
The ensuite has twin integrated basins in a long vanity with a full-height mirror flanked by glass display shelves.

In the rear corner is a big shower with frameless glass screens and feature tiling, and there is a separate toilet.



Limestone paths and stepping stones wind past landscaped gardens to the two entry points.

The company's designers seized the opportunity to capitalise on the tricky block and created the clever illusion of a home which gradually gets bigger.



Custom Built Homes
\$800,000-\$1 million

Suburb: Claremont
Builder: Exclusive Residence
Phone: 9287 4988

